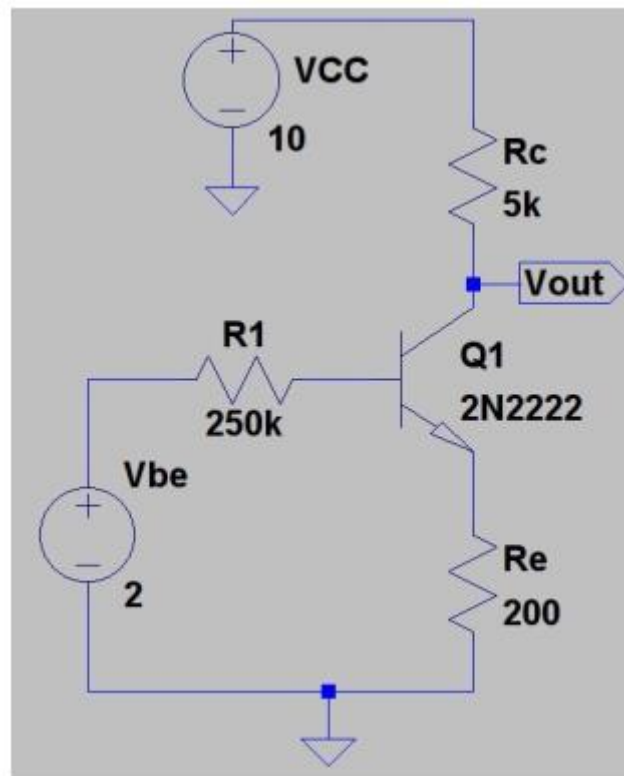


EE 312 LT-Spice HW#1

- 1) Consider the figure below.
- Obtain DC operating points of the transistor.
 - Plot input characteristics of the transistor below. For this simulation, you change VCC between 0V and 20V, whereas Vbe changes from 0V up to 5V.



Due Date: 22.03.2018

- 2) Consider the circuit below. Plot the AC gain between 1Hz and 1GHz. Show f_L and f_H of the circuit.

