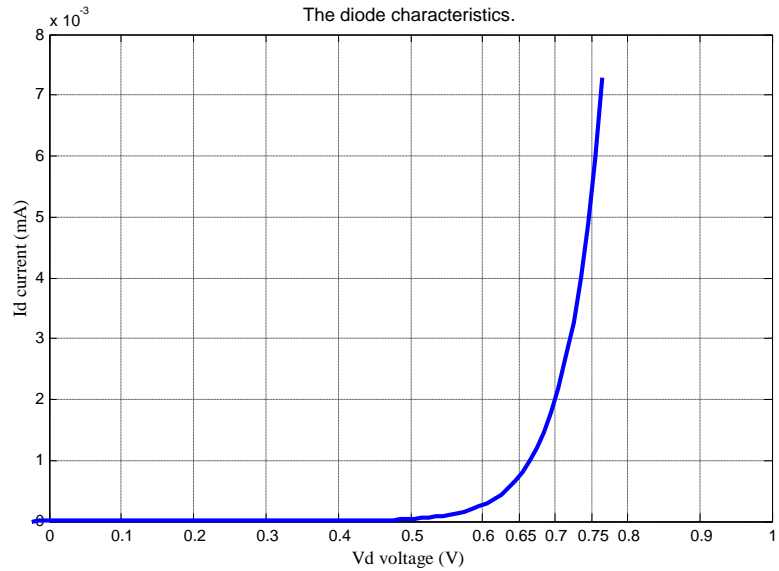
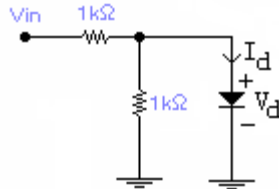


1) The diode used in the following circuit has the characteristics shown by the graph.

Draw the *load line* (V_d and I_d relationship from the circuit) on the graph and find V_d and I_d values (within $\pm 5\%$ range) for each of the following input voltages:

- a) $V_{in}=1$,
- b) $V_{in}=2$,
- c) $V_{in}=4$.



2) For Question 1, find the required values assuming that the diode is (0.7 Volt) ideal.

3) For the circuit in Question 1, find and draw $V_d = f(V_{in})$ relationship assuming that the diode is (0.7 Volt) ideal. (When drawing the figure, use $[-5$ to $5]$ for the input voltage range.)

ANSWERS